

Jupiter Antiques

Spring Catalogue Part-2

Derby



Email: jupiterantiques@aol.com
Tel: 01273 536563

Website: JupiterAntiques.co.uk
Mobile: 07931 312517



1. Derby barrel shaped mug painted with fancy birds in landscape, verso with a bird on a branch, no mark, 5.75 ins. H. c. 1758-62



2. Derby pierced basket with turquoise handles painted with cherries and moths in the style of the Moth Painter, Patch marks, 11.25 ins. W. c. 1765-68



3. Derby silver shaped mug painted in puce with the banded hedge, no mark, 4 ins. H. c. 1760



4. Derby scalloped plate or butter tub painted with cherries and moths in the style of the Moth Painter, no mark, 6.625 ins. D. c. 1765-68



5. Derby ointment pot with mask heads painted with a landscape & two flying insects, no mark, 3 ins. W. c. 1760



6. Derby rare two handled miniature basket painted in puce with central flowers, the border with a band of flowers, no mark, 3.75 ins. W. c. 1758-62



7. Derby dry edge figure of the Piping Shepherd, with a dog at his side no mark, 5 ins. H. c. 1752-55



8. Derby large figure of Mars, wearing a Helmet, standing beside a shield and a flag, patch marks, 14 ins. H. c. 1765-75



9. Derby pair of figures of a boy and girl depicting Spring and Summer, seated a flat scroll base patch marks, 4.5 ins. H. c. 1756-58



10. Derby pair of figures of two boys from the senses depicting Sight with a mirror and Smell holding a flower to his nose, each seated beside a bird or dog, patch marks, 7 ins. H. c. 1765 -75



11. Derby group of a young man and woman dancing, he with his hand upon her head, both standing on a rococo scroll base, patch marks, 7. ins. H. c. 1771-75



12. Derby group of two child musicians, he with a pipe and her with a tambourine seated on rock by a tall tree, patch marks, 10 ins. H. c. 1775



13. Derby early coffee cup and saucer painted in Cotton Stem style with meandering floral sprays, no mark (saucer) 4.875 ins. D. c. 1758-62



14. Derby coffee cup of square section with canted corners and a wishbone handle painted with a cockeral fight, verso with figures at a table, no mark, 2.25 ins. H. c. 1756-58



15. Derby coffee cup of fluted form painted with an oriental figure beside a table, another figure verso, no mark 2.5 ins. H. c. 1758-60



16. Derby coffee cup of square section with canted corners and a wishbone handle painted with flowers by the Cotton Stem painter, no mark, 2.25 ins. H. c. 1758-60



17. Derby coffee cup with wishbone handle painted with flowers by the Cotton Stem painter, no mark, 2.5 ins. H. c. 1760-62



18. Derby coffee cup with moulded twig handle painted with Withers style flowers, including a large rose, no mark, 2.5 ins. H. c. 1762-68
Prov: Wilders Col.



19. Derby two handled cup painted with flowers by the Cotton Stem painter, no mark, 5.5 ins. W. c. 1758-60



20. Derby coffee cup with moulded handle painted with flowers by the Cotton Stem painter, no mark, 2.5 ins. H. c. 1758-60



21. Derby small size teapot and cover painted with a large floral spray including a tulip, with wishbone handle and crabstock spout, no mark, 6.25 ins. W. c. 1765-68



22. Derby small size teapot and cover painted with a floral spray & random sprigs including a tulip, with ear shaped handle and crabstock spout, no mark, 6.5. ins. W. c. 1772-78



23. Derby early taperstick painted with flowers, having dentil gilding to the base, patch marks, 4.75 ins. H. c. 1765-68



24. Derby toilet pot painted with fancy birds in landscape on a cobalt blue and gilt ground, patch marks, 2 ins. H. c. 1762-65



25. Derby mug of rare tall conical shape with kick handle painted with flowers, rare incised 'N' mark, 6.25 ins. H. c. 1758-60



26. Derby two handled pierced basket painted with flowers by the Cotton Stem Painter, no mark, 6.75 ins. W. c. 1758-60



27. Derby rare and important small cos lettuce leaf moulded sauceboat, delicately painted with scattered flower sprays, unmarked. 4.875 ins. W. c. 1753-55 (decoration) Duesbury I c. 1756



28. Derby fluted creamboat with pedestal foot painted with a large floral spray, patch marks 4.75 ins. W. c. 1758-62



29. Derby early dolphin moulded ewer painted with delicate floral sprigs, patch marks, 3.875 ins. W. c. 1762-65



30. Derby rare duck sauceboat, the head being the handle and the tail the spout, the body naturally moulded, red mark, 4.375 ins. W. c. 1810



31. Derby tureen and cover with three handles, moulded and floral encrusted with leaves and flowers, patch marks, 8.25 ins. W. c. 1765-68



32. Derby baluster mug painted with a large floral spray under an everted rim, no mark, 6 ins. H., c. 1765-68



33. Derby barrel shaped mug painted in bright colours with floral sprays and sprigs, no mark, 4 ins. H. c. 1768-72



34. Derby coffee pot and cover of large size with a bright floral sprays and sprigs, no mark 9 ins. H. c. 1775-80



35. Chelsea Derby tureen and cover painted with flowers under a gilt light blue border, no mark, 7.5 ins. W. c. 1775-80



36. Chelsea Derby tureen and cover painted with green vines entwined in two puce lines, Blue crown 'D' mark 7.25 ins. W. c. 1775-80



37. Derby teabowl and saucer painted with two landscapes by Zachariah Boreman Pattern 86, puce mark, (saucer) 5 ins. D. c. 1790-95



38. Derby teacup and saucer with elaborate classical gilding painted with 'In Wales' and 'In Scotland'. red mark, (saucer) 5.5 ins. D. c.1805-10



39. Derby teacup and saucer with elaborate interlinked gilding painted with 'Near Verona, Italy' and 'Near Lisbon', red mark, (saucer) 5.5 ins. D. C. 1810



40. Derby coffee cup, teacup and saucer with elaborate classical gilding painted with three landscapes probably by Robert Brewer, red mark, (saucer) 5.4 ins. D. c. 1815-20



41. Derby plate with elaborate classical gilding painted with 'Near Dorking, Surrey', red mark, 8.75 ins. D. c.1810-15



42. Derby cylindrical vase or beaker having turquoise ground and elaborate oval gilt panel with man in mountain landscape, red mark c. 1810-15



43. Derby plate painted with 'View of Kedleston Hall' under a blue & gilt border, attributed to Zachariah. Boreman, Blue crown, baton 'D' (pattern) 50 mark, 8.5 ins. D. c. 1795-1800



44. Derby heart shaped dish painted with 'On the River Trent' in a heart shaped gilt panel under a gilt and turquoise border, black mark, 9.875 ins. W. c. 1795 -1800



45. Derby plate painted with 'Coniston Lake' by G. Robertson, from the Blenheim service, pattern 178, Blue crown, batons 'D' mark, 9.5 ins. D. c. 1795



46. Derby dish painted with a central landscape, titled 'In Westmorland' under an elaborate classical gilt border, red mark, 11 ins. W. c. 1815-25



47. Derby bowl painted with titled landscapes, 'In Westmorland' and 'In Deveshire' on a cobalt blue and gilt ground, red mark, 6 ins. D. c. 1815-20



48. Derby two handled vase painted with oval landscape scenes, 'In Wales', and 'Near Bristol' on a cobalt blue and gilt ground, Black mark, 7 ins., H. c. 1805-10



49. Derby rare octagonal plate painted with a Chinese garden landscape in famille rose style, no mark, 8 ins. D. c. 1800



50. Derby plate with a scene titled 'Near Little Eaton, Derbyshire' by John Brewer, the border with five oval panels painted with animals, red mark, 9.75 ins.D. c. 1805



51. Derby plate painted with a central landscape titled 'Lake of Perugia, Italy', under a green border by George Robertson, pattern 343, blue mark 9.5 ins. D. c. 1790



52. Derby coffee can, teacup and saucer painted with 'Near Loughbro' (sic), 'Near Breadsall, Derbyshire' and 'In Germany' with elaborate classical gilding, red mark, (saucer) 5.5 ins. D. c. 1810-15



53. Derby plate painted probably by Richard Dodson with a group of fancy birds perched on a tree within an elaborately gilded border, red mark, 8.75 ins. c. 1815-25



54. Derby plate probably painted by Richard Dodson with coloured birds in panels, reserved on a pale turquoise ground, with elaborate gilded borders, red mark, 8.875 ins. D. c. 1815



55. Chelsea Derby moulded teabowl and saucer painted with a variation of the Queen Charlotte pattern, Anchor 'D' in gold, (saucer) 5 ins. D. c. 1772-75



56. Chelsea Derby coffee cup and saucer painted with a circular chain of flowers and gold initials, FSF, Anchor 'D' in gold, (saucer) 5.125 ins. D. c. 1772-75



57. Chelsea Derby teabowl and saucer painted with apples, cherries a fig, and other fruit, Gold Anchor mark, (saucer) 5 ins. D. c. 1772-75



58. Chelsea Derby coffee cup & saucer with pineapple moulding highlighted in claret under a leaf and tied ribbon border, no mark, (saucer) 5 ins. D. c. 1772-75



59. Chelsea Derby rare coffee cup and saucer painted with a Hop Trellis pattern, Separate Anchor and 'D' marks in gold, (saucer) 5 ins. D. c. 1772-75



60. Chelsea Derby moulded teabowl and saucer painted with formal flower sprays under a crimson curtain border, Gold Anchor mark, (saucer) 5 ins. D. c. 1772-75



61. Chelsea Derby custard cup and cover painted with a large spray of flowers, Anchor 'D' in gold, 3.5 ins. H. c. 1775



62. Chelsea Derby custard cup and cover painted with a large spray of flowers, Anchor 'D' in gold 3.25 ins. H. c.1775



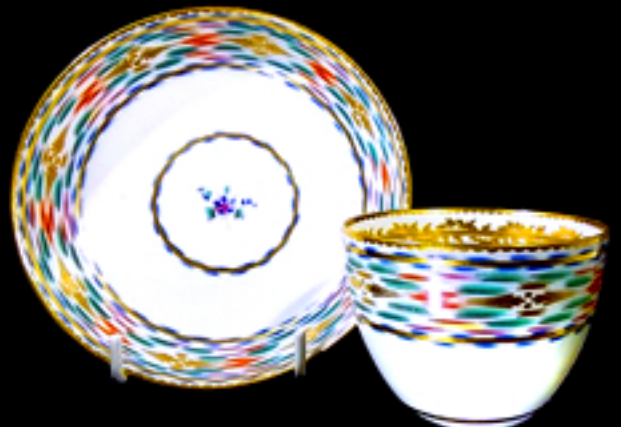
63. Chelsea Derby custard cup and cover painted with a large spray of flowers Blue crown 'D' mark, 3.25 ins. H. c.1780



64. Chelsea Derby chocolate cup and cover painted with a large spray of flowers, Anchor 'D' in gold, (saucer) 5.5 ins. D. c.1775



65. Chelsea Derby chocolate cup and cover painted with a large spray of flowers Anchor 'D' in gold (saucer) 5.75 ins. D. c.1775



66. Derby bucket shaped teabowl and saucer painted with a wide multi-colour border, gilded decoration on the inside' puce mark pattern 79, (saucer) 5.5 ins. D. c.1775



67. Derby rare yellow ground sucrier and cover with two classically gilded borders and gilt ring handle, puce mark, 6.5 ins. H. c. 1795-1800



68. Derby magnificent sucrier and cover with two continuous rose panels and gilt ring handle, puce mark 529, 6.5 ins. H. c. 1795-1800



69. Derby bough pot and cover with ram's head handles painted with a pineapple, grapes and flowers, puce mark, 9.5 ins. W. c. 1800



70. Derby bough pot and cover with ram's head handles painted with 'At Stoke Bridge Near Edinburgh' puce mark, 9.5 ins. W. c. 1800



71. Derby bough pot and cover painted with 'Corta Castellama' titled, incised asterisk by I. Fansworth, red mark, 7.75 ins. W. c. 1800-1805



72. Chelsea Derby oval pierced basket with turquoise ground, the centre with a rose bouquet, Gold anchor 'D' mark, 8.75 ins. W. c. 1775-78



73. Derby botanical plate painted with 'Canterbury Bells' under a leaf gilt border, titled, Pattern 141, Blue crown batons 'D' mark, 8.875 ins. D. c. 1795-1800



74. Derby shell shape botanical dish painted with an 'Anemone' in the style of Quaker Peg, under an elaborate gold border, titled, red mark, 9.5 ins. W c. 1815-20



75. Derby botanical plate painted with 'Crane's Bill' under a leafy gilt border, titled, Pattern 115, Blue crown batons 'D' mark, 9.125 ins. D. c. 1795-1800



76. Derby botanical plate painted with 'Blue Navelwort' under a leafy gilt border, titled, Pattern 115, Blue crown batons 'D' mark, 9.125 ins. D. c. 1795-1800



77. Derby botanical plate painted with 'Marsh Mallow' under a mustard yellow border, titled, pattern 216, Blue crown, batons 'D' mark, 9 ins. D. c. 1795-1800



78. Derby botanical plate painted with 'Common Pink' under a leafy gilt border, titled, pattern 115, Blue crown batons 'D' mark, 9.125 ins. D. c. 1795-1800



79. Derby botanical moulded plate painted with 'Lychnis Dioica' under leafy and line borders, probably by one of the Brewers, pattern 141, Blue mark, 8.75 ins. H. c. 1790-1800



80. Derby botanical moulded oval dish painted with 'Yellow Day Lily' under leafy and line borders, probably by one of the Brewers, pattern 141, Blue mark, 9.75 ins. H. c. 1790-1800



81. Derby botanical shell shaped dish painted with a 'Double Yellow Rose' by 'Quaker' Pegg or perhaps his close friend Philip Clavey, Red mark, 9.25 ins. W. c. 1815-20



82. Derby botanical shaped oval dish painted with a 'Rhododendron' by 'Quaker' Pegg, Blue mark, 11.75 ins. H. c. 1796-1801



83. Derby botanical tureen stand painted with a 'Scarlet Ipomoea' by 'Quaker' Pegg or Philip Clavey, Blue mark 197, 9.25 ins. W. c. 1796-1801



84. Derby moulded plate painted with St. John's Wort, titled, Blue mark pattern 197, 9.125 ins. D. c. 1796-1801



85. Derby plate painted with roses, the green dot border with five panels containing roses, from a service made for the Marquis of Bath, at Longleat, red mark, 9.5 ins. D. c.1810



86. Derby moulded plate painted with a large spray of colourful flowers under a blue and line gilt border, pattern 100 by Wm. Billingsley, puce mark, 8.625 ins. D. c. 1795



87. Chelsea-Derby caudle cup & trembleuse stand painted with a band of flowers inside undulating blue and pink ribbons, and scattered flowers, Gold Anchor mark (saucer) 5.5 ins. D. c. 1775



88. Derby moulded plate painted by Wm. Billingsley with a large central rose and a sprig of forget-me-nots enclosed by a salmon and gilt border, puce mark 152, 9 ins. D. c. 1790-95



89. Derby rare ice cup painted with five large roses and a band of roses by Wm. Billingsley, puce mark, 2.5 ins. H. c. 1791-95



90. Chelsea Derby fine plate with painted with festoons of flowers, a rose spray painted within an elaborate gilt panel, no mark 8.375 ins. D. c.1772



91. Derby fine pierced border plate painted with asymmetrical flowers by 'Quaker' Pegg, red mark, 9.75 ins. D. c. 1810-15 cf. Bonhams, 8-4-09 Lot 302



92. Derby fine pierced border plate painted with bold flowers by Leonard Lead, red Bloor mark, 9.75 ins. D. c. 1810-15



93. Derby fine plate painted with fruit and nuts by Geo. Complin with in two gilt borders, the rim with a coloured leafy border, puce mark 140, 7.625 ins. D. c. 1791-95



94. Derby porter mug, painted with a gold panel depicting full-blown flowers, red mark 4.375 ins. H. c. 1815-20



95. Derby porter mug, painted with a gold panel depicting full-blown flowers, red mark 5 ins. H. c. 1815-20



96. Derby beaded griffin handled chocolate cup and saucer on four feet, the cup painted with a continuous floral design, the inside gilt border matching the saucer, red mark (saucer) 5.4 ins. H. c. 1815



97. Chelsea Derby plate finely painted in neo-classical style with a chain of roses, leaves and other flowers enclosing an urn, Anchor 'D' mark 8.5 ins. c. 1775



98. Chelsea Derby plate finely painted in neo-classical style with a central urn, scattered sprigs and a dark blue and tooled gilt border Gold anchor mark 9 ins. D. c. 1772-75



99. Chelsea Derby plate finely painted in neo-classical style with a central urn, scattered sprays and sprigs, and bright blue and gilt border, no mark, 8.625 ins. D. c. 1780



100. Chelsea Derby plate finely painted in neo-classical style with a central urn, scattered sprays and sprigs, and bright blue and gilt border, Blue crown 'D' mark, 9.5 ins. D. c. 1780



101. Chelsea Derby plate finely painted in neo-classical style with a chain of acanthus leaves, enclosing an urn, having a blue & gilt border, Anchor 'D' mark 8.75 ins. D. c. 1775



102. Chelsea Derby cream jug painted in neo-classical style with wreaths of flowers and acanthus leaf chains between blue borders, Blue crown 'D' mark, 4 ins. H. c. 1780



103. Derby deep pickle leaf dish with triple stalk handle, printed with a loose spray, including a rose and a rosebud, within a feathered border and serrated rim, 4.75 ins. H. c. 1770-75



104. Derby leaf shaped butterboat printed and painted in underglaze blue no mark, 2.625 ins. H. c. 1775-80



105. Derby underglaze blue shell shaped pickle dish painted with flowers, the handle with two border patterns, c. 1770



106. Derby asparagus server painted a Narcissus under a cell border, no mark, 3 ins. H. c. 1770



107. Derby plate painted in underglaze in Chinese style with a flowerhead surrounded by trailing flower sprays, the rim with a brown line, no mark, 8.5 ins. D. c. 1770-75



108. Derby sauceboat moulded with panels, flanked by flowers and fruit, painted in bright blue with Chinese buildings beside a diagonal rock, no mark, 8.25 ins. W. c. 1760-65



109. Derby fine teacup and saucer painted with pattern 529 by Wm. Billingsley with roses in continuous panel, puce mark, (saucer) 5.5 ins. D. c. 1791-95



110. Derby fine coffee cup painted by Wm. Billingsley two large floral bouquets, no mark, 3 ins. D. c. 1790-95



111. Derby shell moulded ewer painted with coloured flowers, no mark, 4.15 ins. W. C. 1762-68



112. Derby Mason Dwarf, his hat having an inscription, his left hand holding a stick, incised 227 to base 7 ins. H. C. 1820-30



113, Derby white and gilt figure of a squirrel eating a nut, no mark, 2.75 ins. H.

114. Derby white and gilt figure of a Fox seated on it's haunches, no mark 3 ins. H C. 1820-30



115. Derby figure of a Monkey playing a trumpet, no mark, 4ins. H.

116. Derby figure of a Monkey playing cymbals, no mark, 4ins. H. c. 1815-30